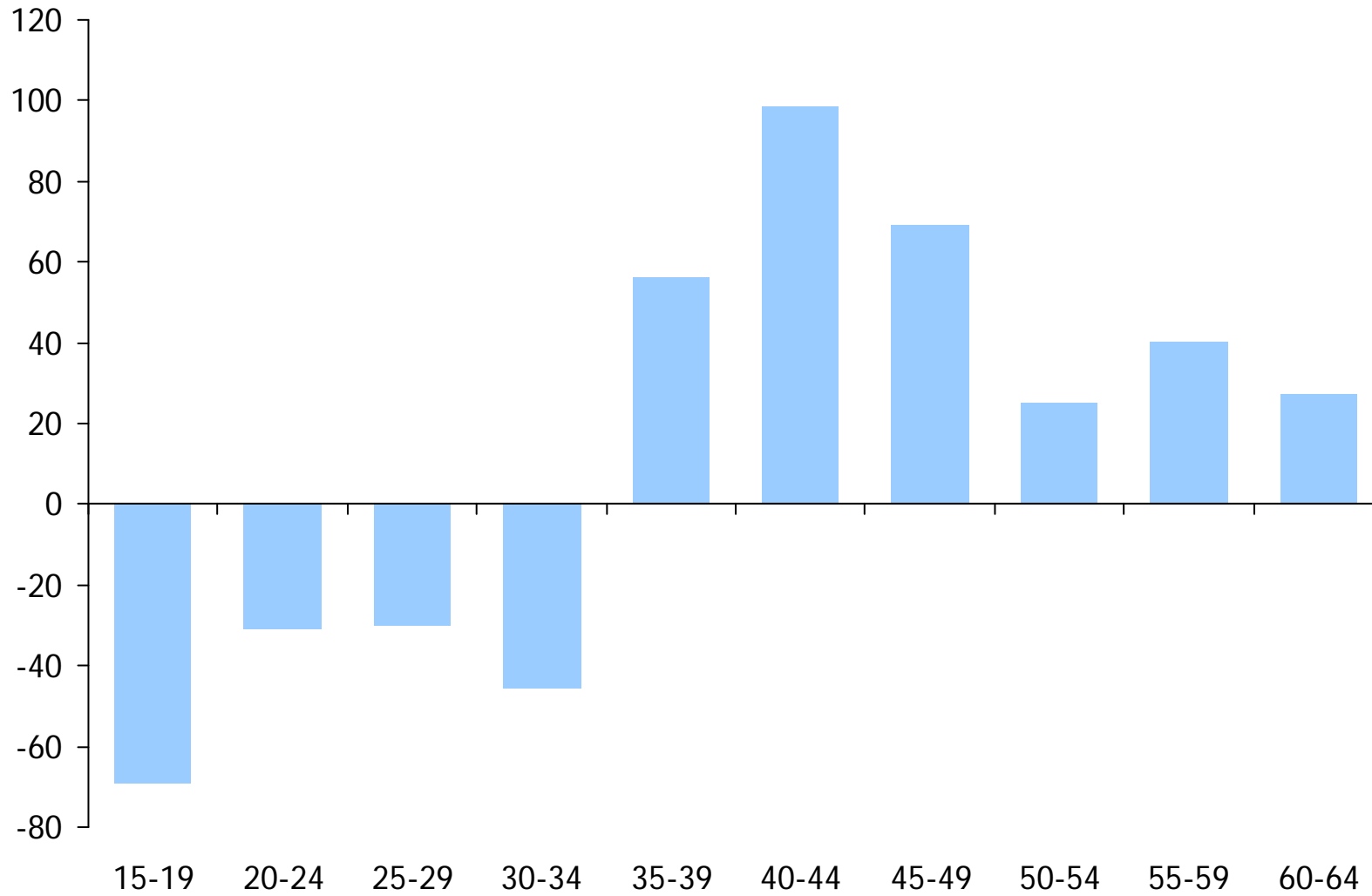


Skills and the Telford & Wrekin Economy

Corin Crane
Economic Development Manager
Shropshire LSC
01952 235520
corin.crane@lsc.gov.uk

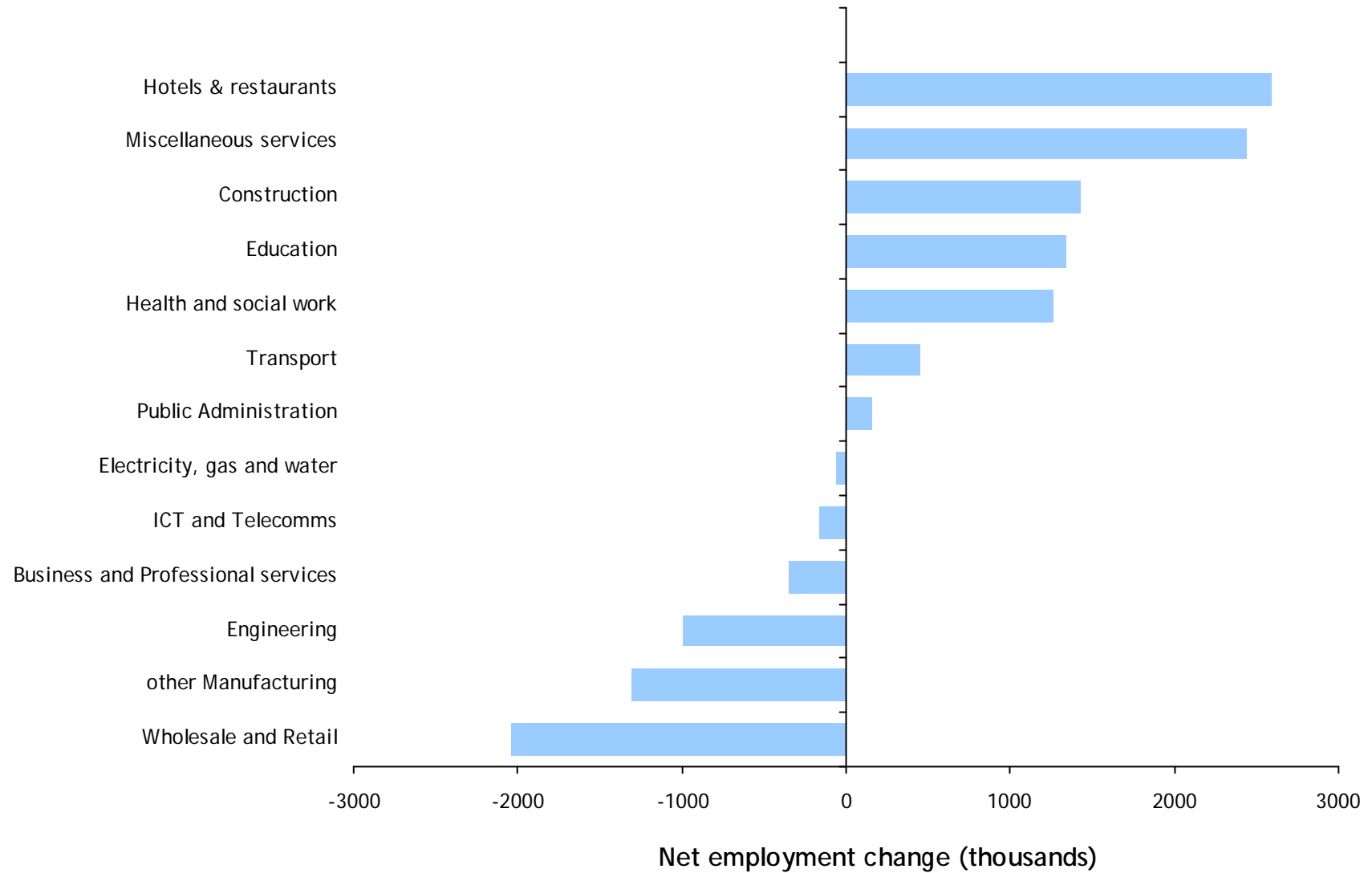
Net change in the working age population of the West Midlands between 1981 and 2006



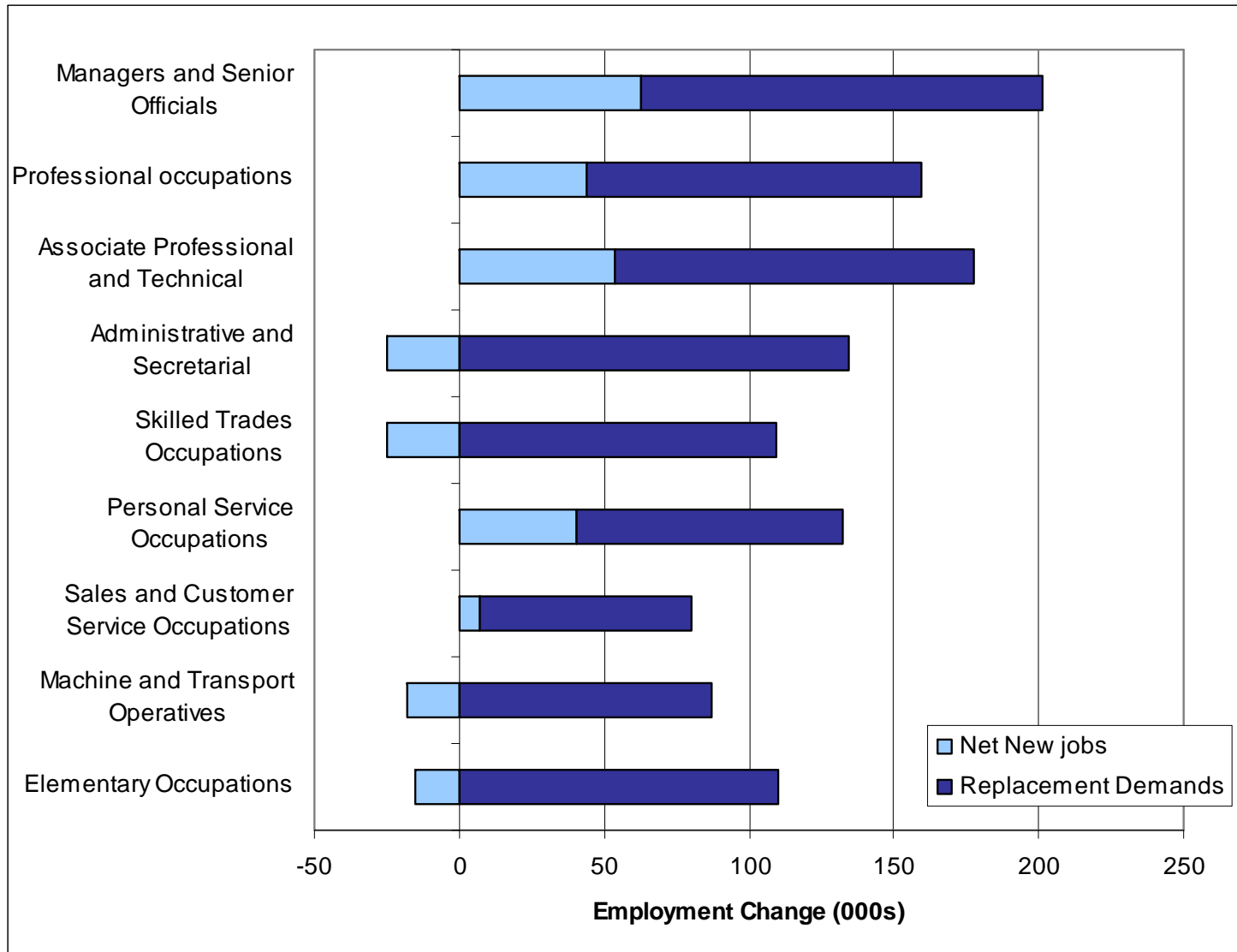
Economic status of working age populations

	In employment	ILO unemployed	Inactive	Total working age population
Birmingham	66%	6%	28%	596,080
Solihull	76%	3%	21%	118,625
Dudley	75%	3%	22%	183,756
Sandwell	67%	5%	28%	167,270
Walsall	71%	6%	23%	146,648
Wolverhampton	67%	6%	28%	140,371
Coventry	74%	4%	22%	189,978
Warwickshire	79%	3%	17%	316,139
Herefordshire	78%	2%	20%	101,073
Worcestershire	78%	3%	19%	333,348
Shropshire	77%	2%	21%	165,898
Telford and Wrekin	73%	4%	23%	99,060
Staffordshire	77%	3%	20%	498,600
Stoke-on-Trent UA	70%	4%	26%	145,934
West Midlands	73%	4%	23%	3,202,780

Net employment change in Shropshire, Telford & Wrekin by sector: 2001-06



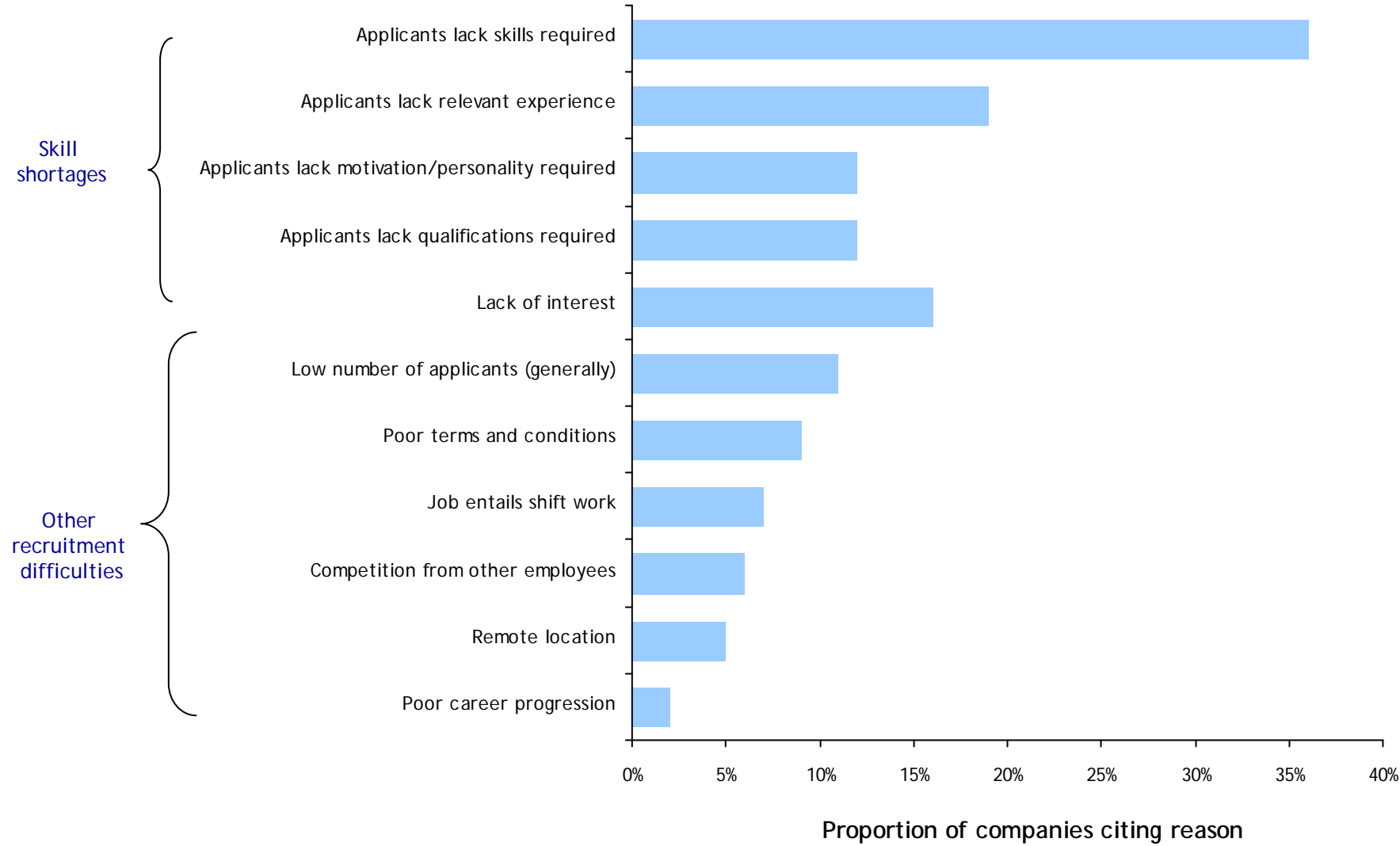
Projections of regional employment change 2007-2017: overall demand



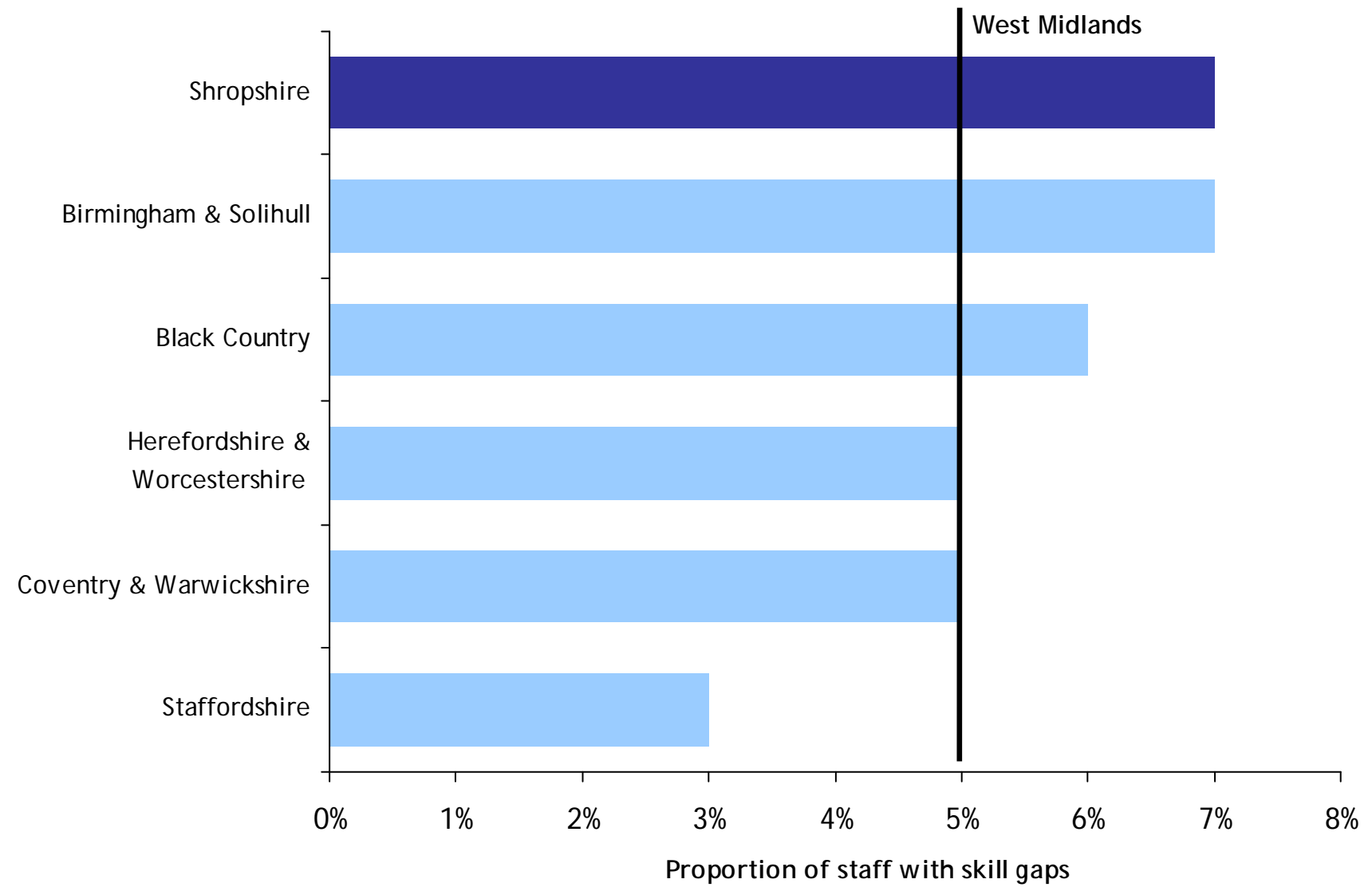
Forecast Employment Change in Shropshire (000s) 2004-2014

Occupation	2004	2014	Net Change	Replacement Demands	Total Requirement
1. Managers and Senior Officials	28	32	4	10	14
2. Professional Occupations	21	25	4	8	12
3. Associate Professional and Technical Occupations	27	30	3	9	12
4. Administrative, Clerical and Secretarial Occupations	24	24	0	10	10
5. Skilled Trades Occupations	28	27	-1	9	8
6. Personal Service Occupations	17	21	4	7	11
7. Sales and Customer Service Occupations	16	18	2	6	8
8. Transport and Machine Operatives	20	19	-1	7	6
9. Elementary Occupations	23	17	-6	8	2
Total	205	214	9	74	83

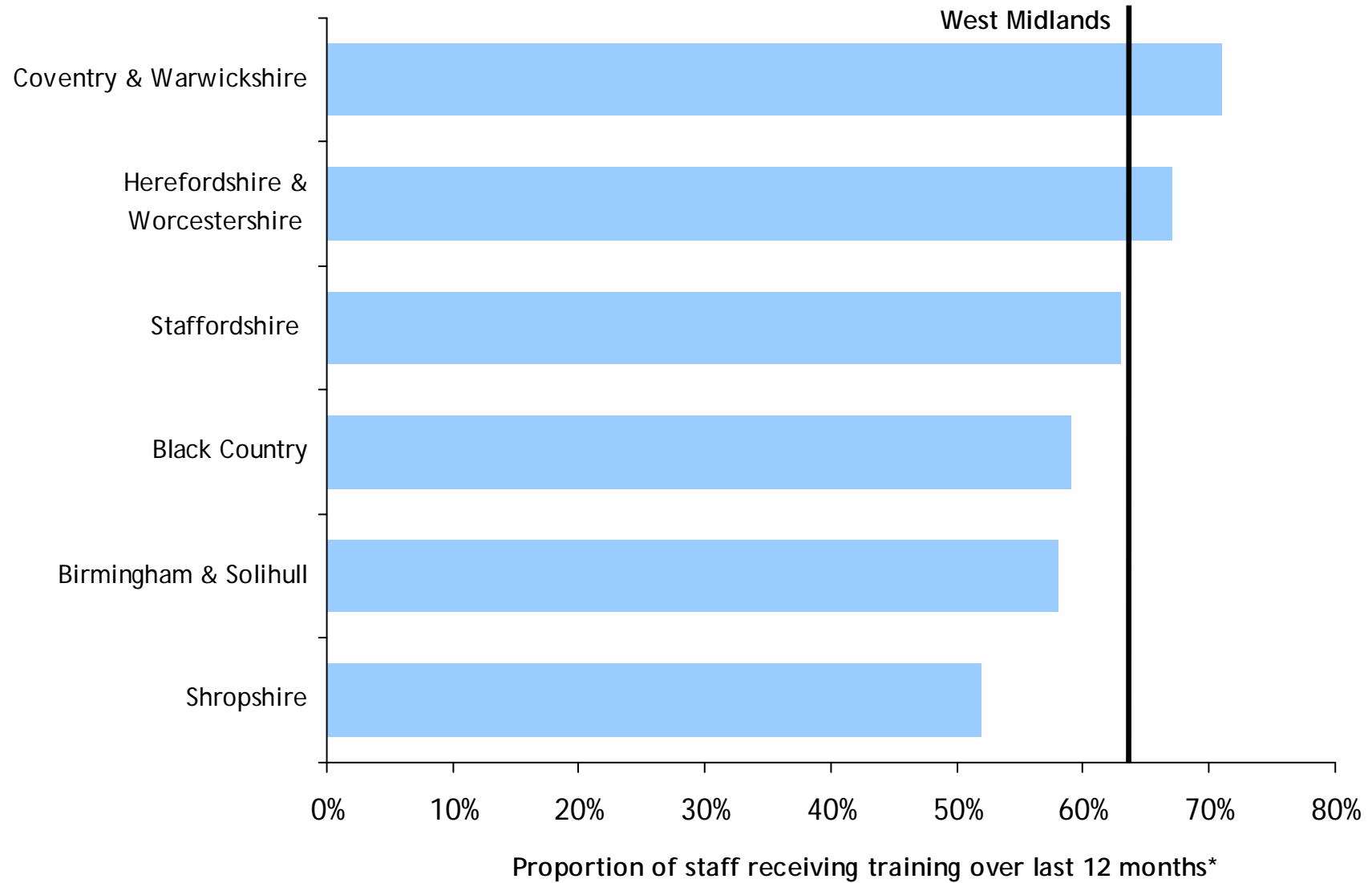
Reasons cited by companies with recruitment difficulties



Proportion of staff with skill gaps



Proportion of staff receiving training over last 12 months*, 2007



* as a percentage of the current workforce

Source: LSC National Employer Skills Survey 2007

Learning & Skills Council 2008

In Conclusion (1)

- Overall trends point to an increased demand for higher skills as the economy shifts away from sectors which rely more on process/plant and elementary occupations and into higher value added sectors.
- Education, Health and Social Work sectors are the most likely to provide training to their staff, with Agriculture the least likely.
- A third of vacancies for associate professional occupations in Telford & Wrekin are hard to fill due to skills shortages, with almost one in five for managerial and professional vacancies. These compare to 13% for all occupations in the sub-region.

In Conclusion (2)

- Skill shortages are a significant factor in recruitment to nearly all categories of occupation we have considered here.
- These forecasts predict that within Shropshire there will be a need for an additional 38,000 people educated degree and higher degree level between 2004 and 2014.
- The single biggest demographic shift over the past 10 years is the number of workers approaching retirement – with large skills gaps forecasted as a result of this
- Telford & Wrekin has some of the highest rates of achievement in the county at 16 and 19 – yet businesses face difficulties recruiting graduates as young people leave the county to study

Employer's Demand

- Simplification of/ and easier access to public procurement for local businesses
- Simplification of business support products
- Development of “Local Skilled Pool of Labour”
- Clearer links between Higher Education and businesses around research and development opportunities

And that's it:

Corin Crane
Economic Development Manager
Learning & Skills Council
corin.crane@lsc.gov.uk
07917559409